

## Easy Blanket For Infant to Teen

The focus fabric for this pattern works well using large prints. Depending on the number of rows, it can be used for an Infant, Toddler, Child or Teen size blanket. Coordinating colors can be laid out in any manner pleasing to you. Have fun with them! There are only 6 seams to match in the Infant size; 8 seams to match in the Toddler/Child size; 10 seams to match in the Teen size. Sew using  $\frac{1}{4}$ " seams.

### **INFANT SIZE: 4 rows**

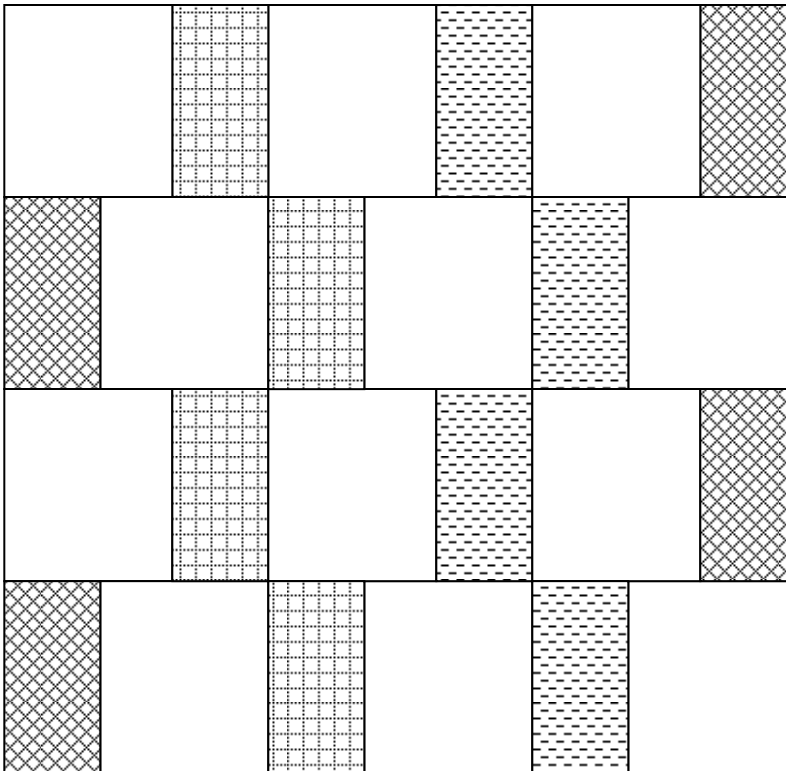
From the focus fabric, cut 12 blocks,  $8\frac{1}{2}$ " x  $10\frac{1}{2}$ " each, **AND** from coordinating fabric[s], cut 12 blocks,  $5\frac{1}{2}$ " x  $10\frac{1}{2}$ " each. The coordinating blocks can be 12 of one color, 6 each of two colors, or 4 each of three colors.

Piece blocks as shown. Finished INFANT size is 39" x 40".

### **TODDLER/CHILD SIZE: 5 rows**

From the focus fabric, cut 15 blocks,  $8\frac{1}{2}$ " x  $10\frac{1}{2}$ " each **AND** from coordinating fabric[s], cut 15 blocks,  $5\frac{1}{2}$ " x  $10\frac{1}{2}$ " each. Note: the coordinating blocks can be 15 of one color, 8 of one and 7 of a second color for two colors, or 5 each of three colors.

Piece as shown, adding a 5<sup>th</sup> row. Finished TODDLER/CHILD size is 39" x 50".



**Tip: Consistent sizes require sewing using  $\frac{1}{4}$ " seams.**

This blanket can be finished using the traditional method, which uses a binding, or the 'envelope' method, which uses no binding. Quilt or tie at least every  $3\frac{1}{2}$  to 4 inches. Quilting in the ditch looks nice and reinforces the blanket. Quilting  $\frac{1}{2}$ " around the outside edges gives a more finished look when using the 'envelope' method.

### **TEEN SIZE: 6 rows**

From the focus fabric, cut 18 blocks,  $8\frac{1}{2}$ " x  $10\frac{1}{2}$ " each **AND** from coordinating fabric[s], cut 18 blocks,  $5\frac{1}{2}$ " x  $10\frac{1}{2}$ " each. Note: the coordinating blocks can be 18 of one color, 9 each of two colors, or 6 each of three colors.

Piece as shown, adding a 5<sup>th</sup> and 6<sup>th</sup> row. Finished TEEN size is 39" x 60".

Cutting instructions are included for those wishing to make this pattern at home.